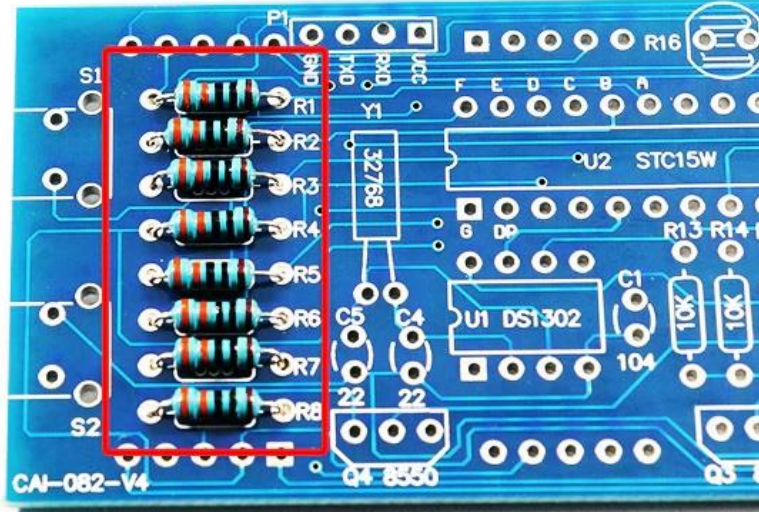


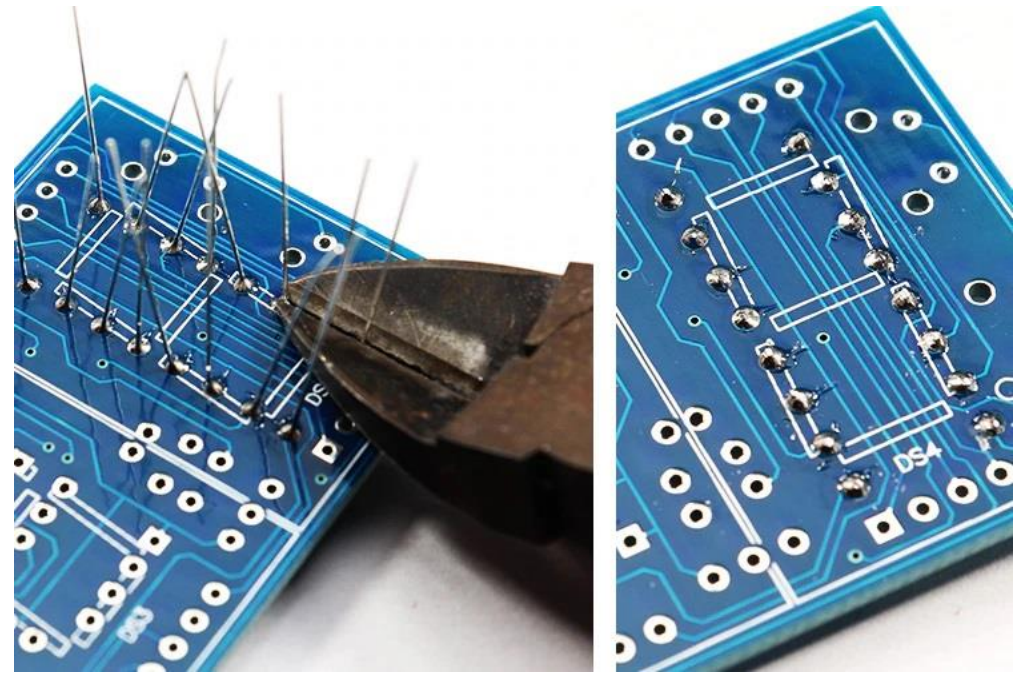


Step 1



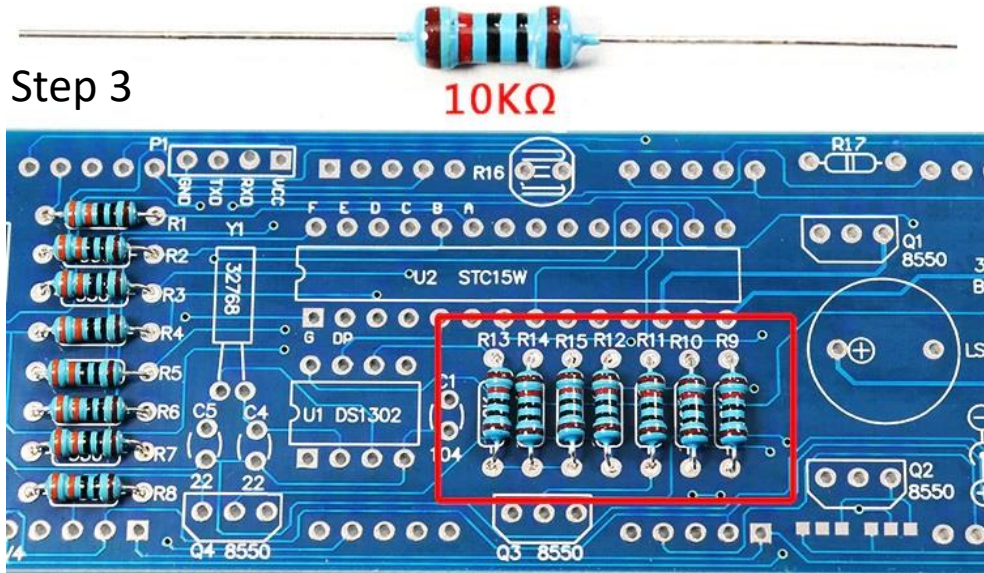
Solder 330Ω resistor. No positive and negative poles.

Step 2



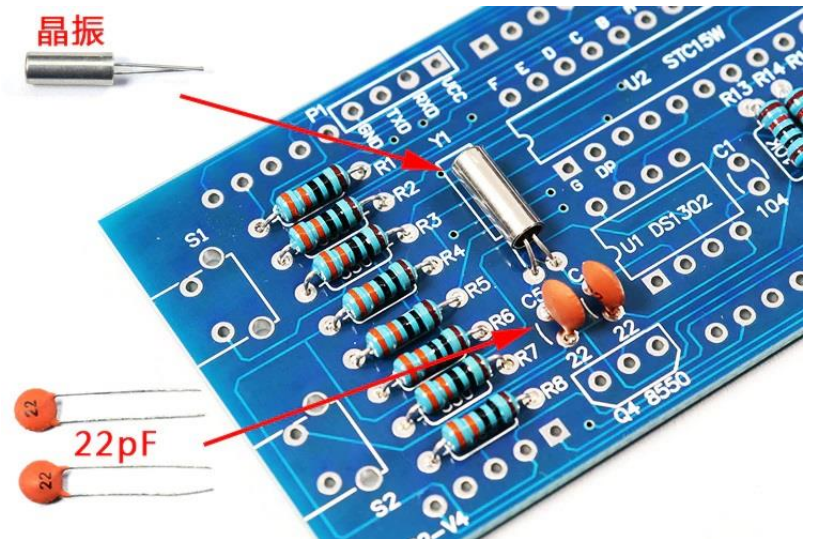
Cut off some component pins before installing the next part

Step 3



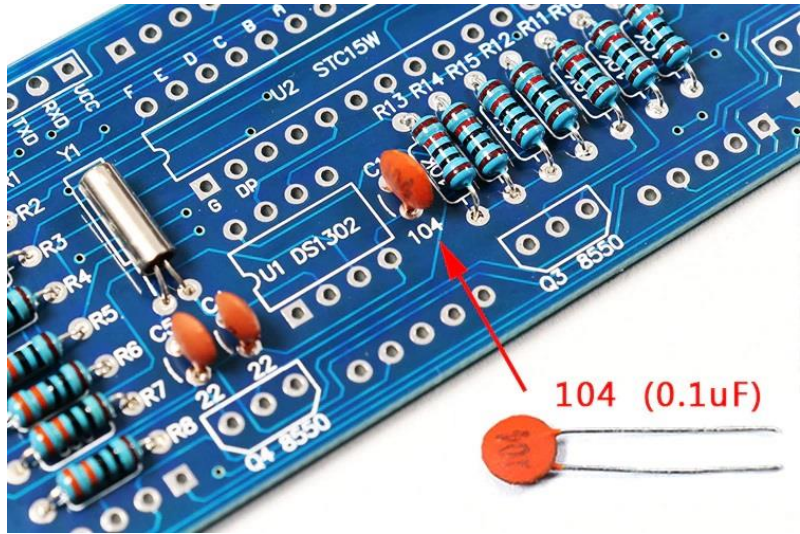
Install a 10KΩ resistor without positive and negative poles.

Step 4



Install the crystal and 22P ceramic capacitors without partitioning positive and negative.

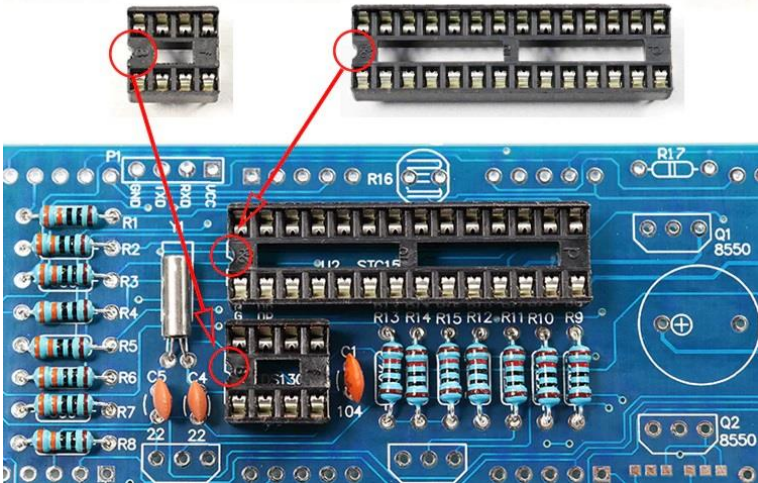
Step 5



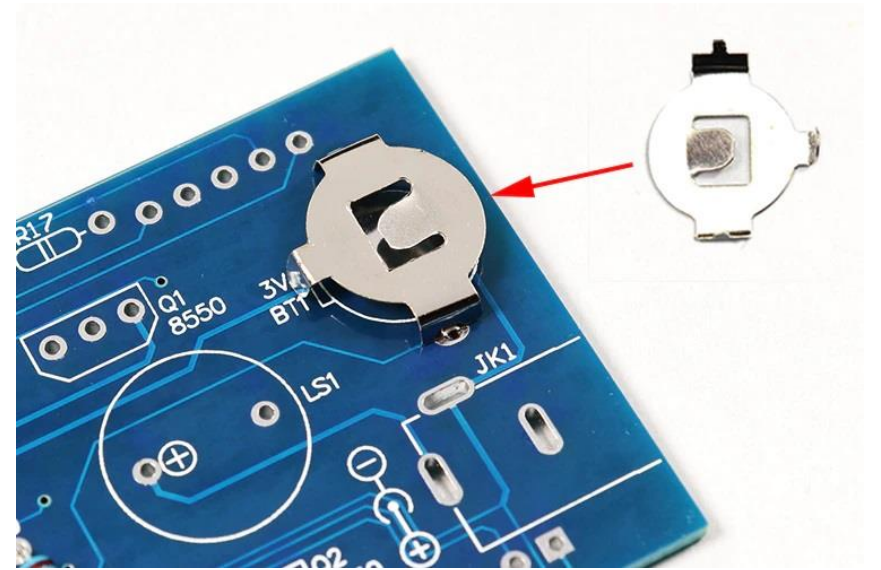
Install 104 ceramic capacitors without positive and negative poles.

Step 7

Install the IC holder. Note that the position of the notch corresponds to the marked position on the circuit board.



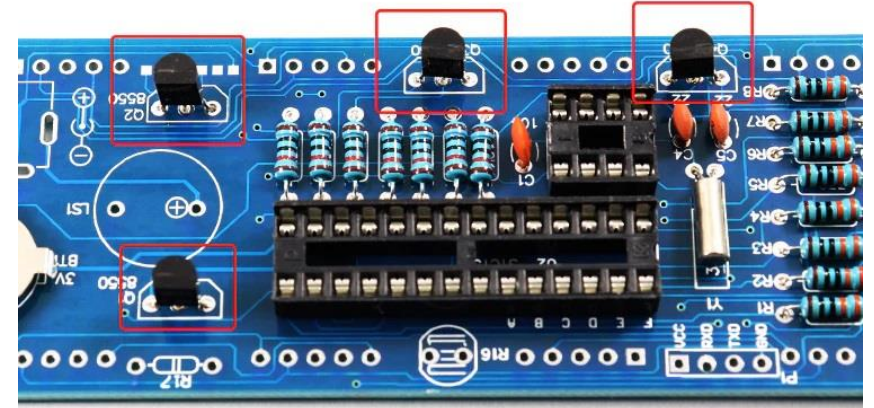
Step 8



Install 1220 battery buckle.

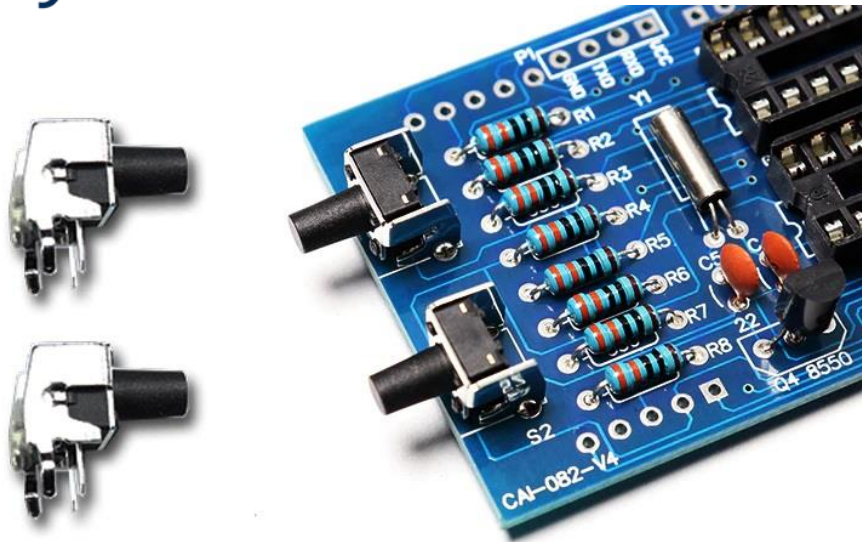


S8550\*4



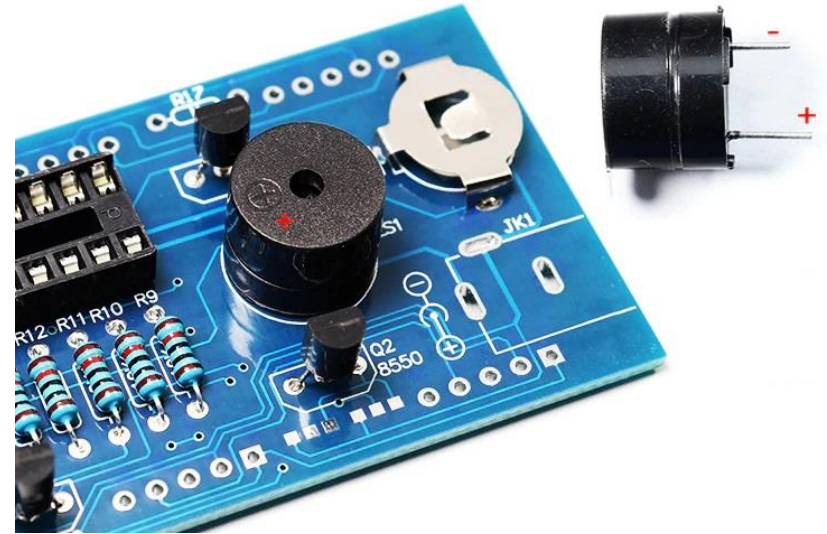
Install the S8550 triode. as the picture shows.

Step 9



Install the touch switch as shown.

Step 10



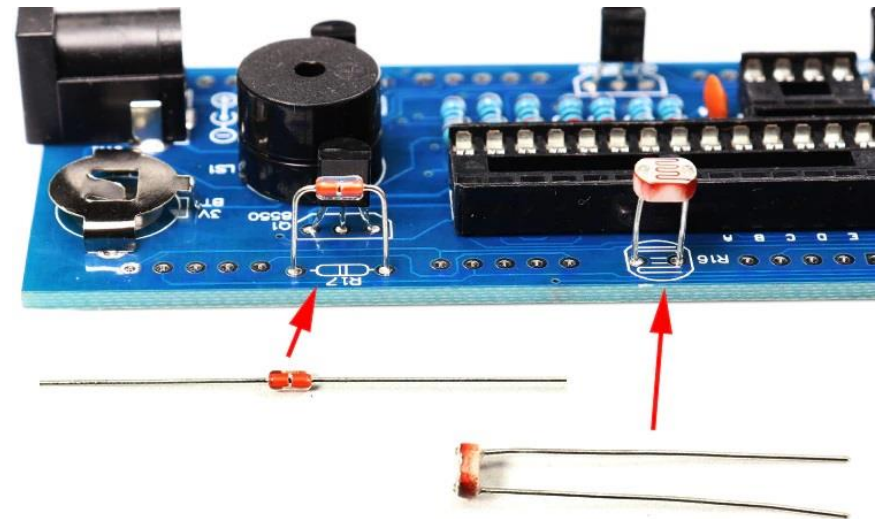
Install the buzzer. The long feet are positive, corresponding to the positive position of the circuit board.

Step 11



Install the power terminals as shown.

Step 12

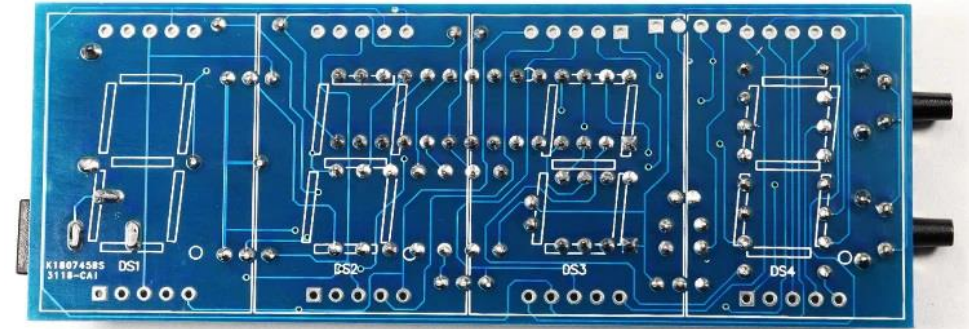


Install the thermistor (R17), install the photoresistor (R16), no positive and negative poles..

Step 13



Step 14



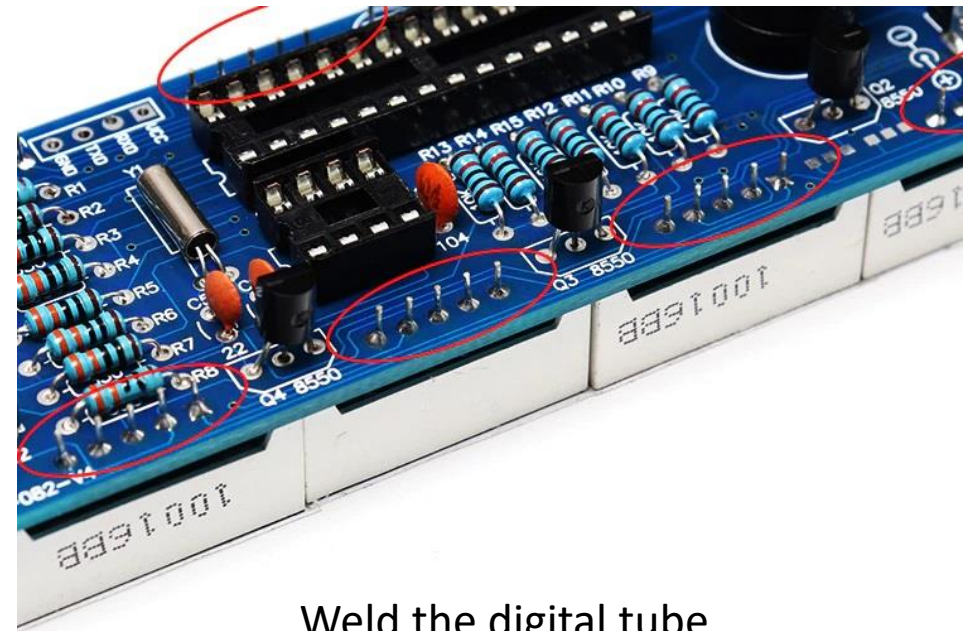
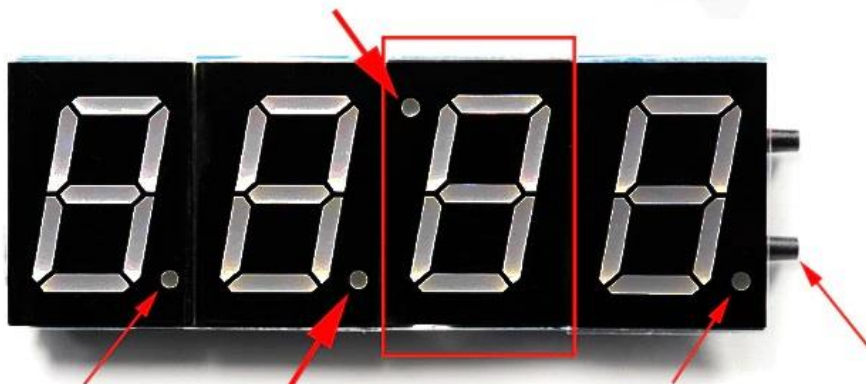
Check whether the component is installed incorrectly.

Check whether the solder joints are good, whether there is a short circuit, and whether there is leakage.

Step 15



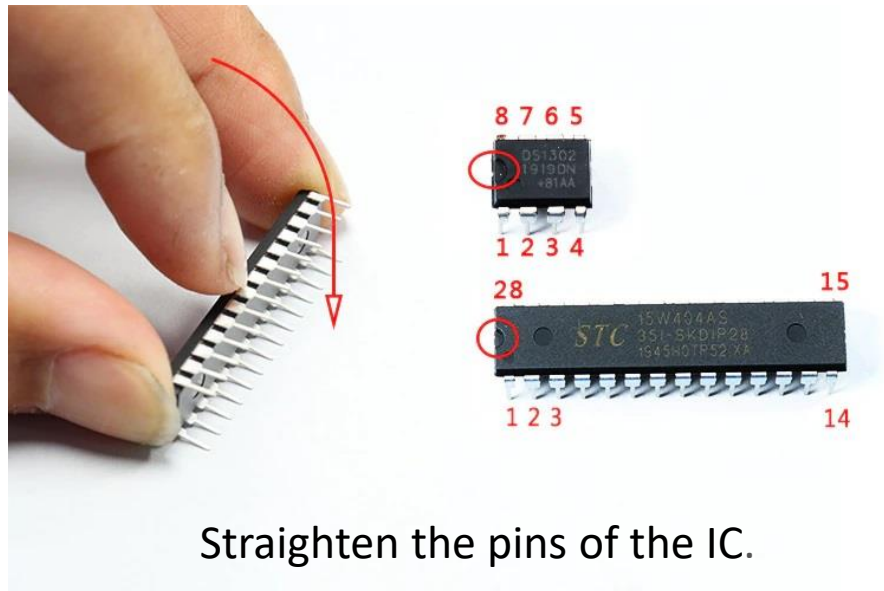
Step 16



Install the digital tube, the third digital tube should be installed upside down as the picture shows.

Weld the digital tube

Step 17



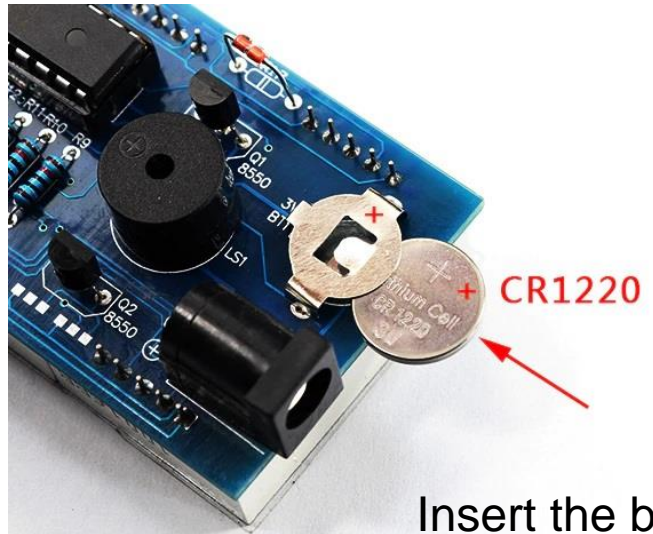
Straighten the pins of the IC.

Step 18



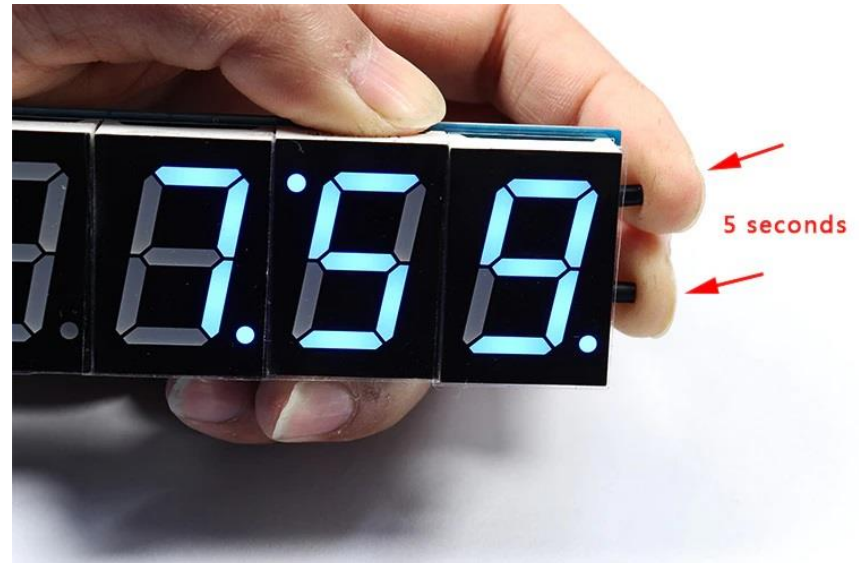
Install the IC into the IC holder as shown in the figure.

Step 19



Insert the battery.

Step 20



Turn on the power and reset the circuit. Press and hold both buttons for more than 5 seconds at the same time, and then release them after 7.59.

Step 21



Tear off the adhesive of the filter film.

Step 23



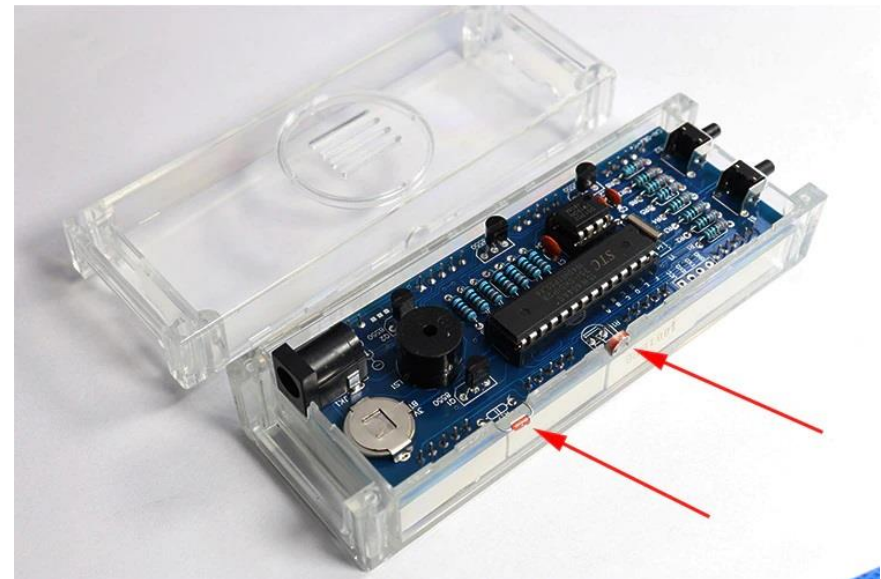
Use scissors to trim the edge of the filter film neatly.

Step 22



Attach the filter film to the digital tube.

Step 24



Put the PCB into the case and place the photoresistor and thermistor into the notch of the case.

Step 25



Fix the case with screws

Step 26



The installation is successful, and then set according to the instructions.