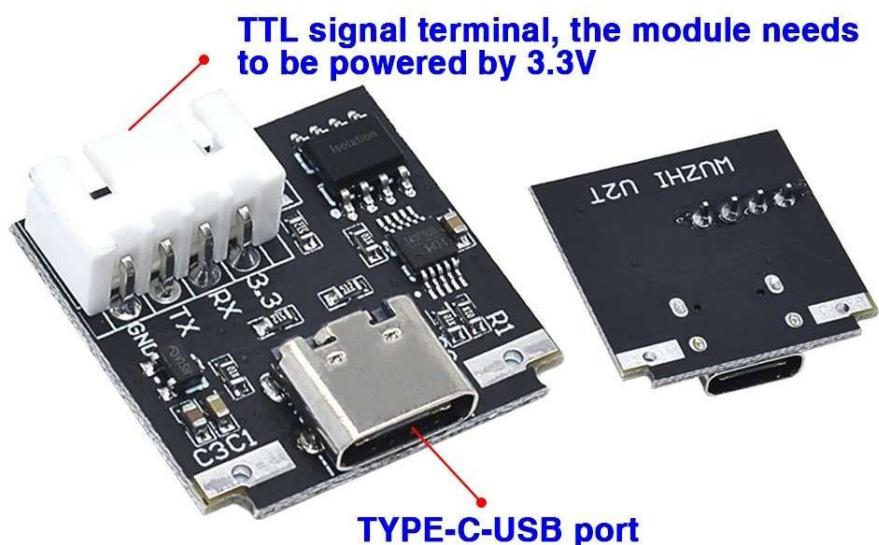


The isolated USB-C to UART TTL CH340E 3.3v Converter module is an isolated USB-TTL.

The interface used is the mainstream TYPE-C interface. Insert the TYPE-C data cable to connect to the computer.

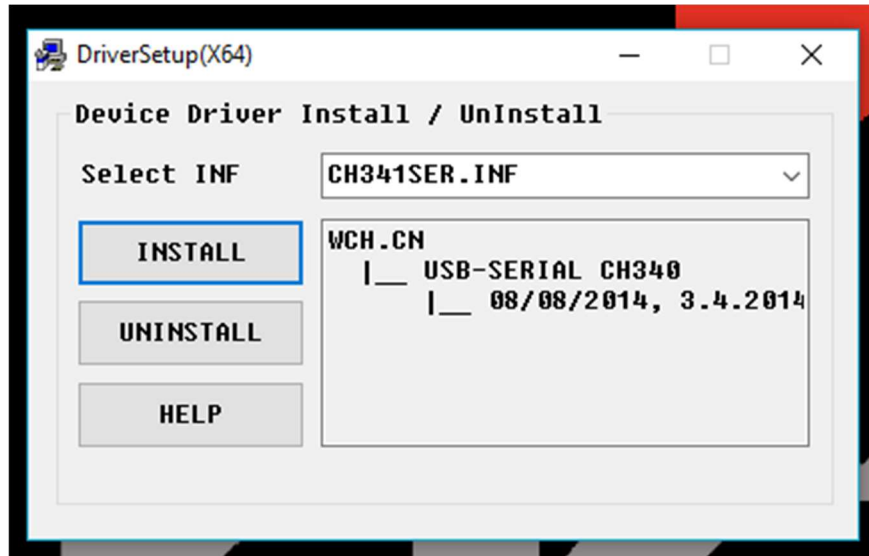
The signal sampling is a dedicated signal isolation chip, which makes the output more stable.

Model	Isolated USB-C to UART
USB Power Supply	USB 5V Type C
TTL Power	3.3v
TTL Signal Level	3.3v
Chip Solution	CH340E
Baud rate	Up to 25600bps
Isolation Level	Ac3000Vrms, Static +/- 8KV
Temperature Range	-40 to 80C
Support System	Win98/CE/2000/2003/2008/XP/WIN8/Win10/Vista/Linux/Macosx
Driver (link)	CH341SER
Hardware	M3 Screws and nuts Cable
Size	23 x 23 x 7mm
Front Panel	40 x 15mm Hole Spacing 30mm



Download and run the executable. [CH341SER.EXE \(in Zip file\)](#)


Click the "Uninstall" button first. Then click on the "Install" button.

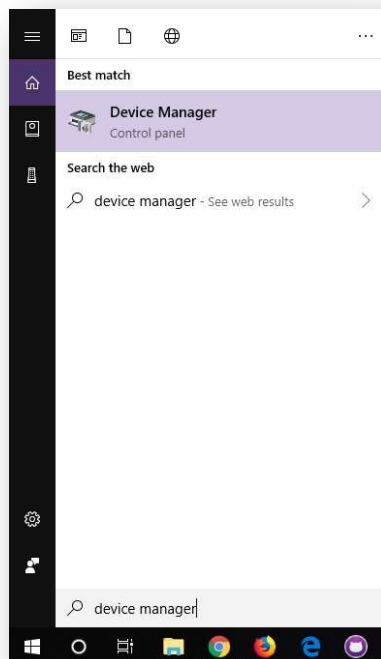


Driver Verification for Windows

To verify that your driver is working, you should see a difference in the following pictures after plugging the CH340 to a USB port.

Device Manager

To check that the CH340 enumerates to a COM port, you can open the device manager. You can click the Start or  (Windows) button and type "device manager" to quickly search for the application.



Note: On Windows 10, the quick search function is picky on the spelling of the application you are searching for. For example, you may get results using "devi" and none for "device".

