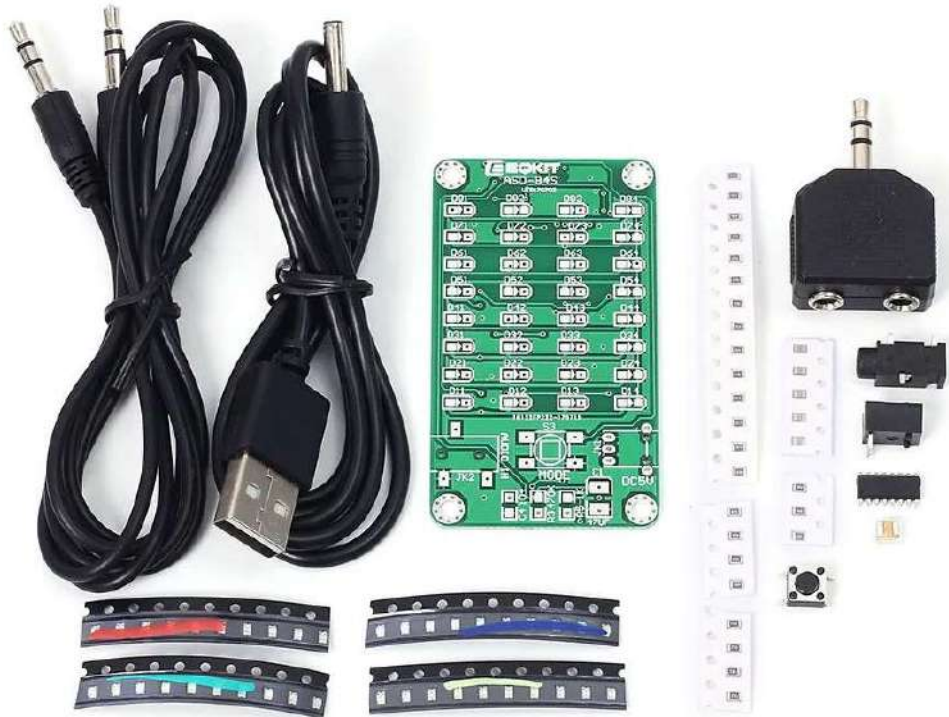


## ASD-84 Audio Spectrum Display 8x4 DIY Kit Music Level Indicator



### Instructions:

Step 1: Complete the installation in the normal way following PCB Silk Screen Marking to matching Component List and schematic. (last page).

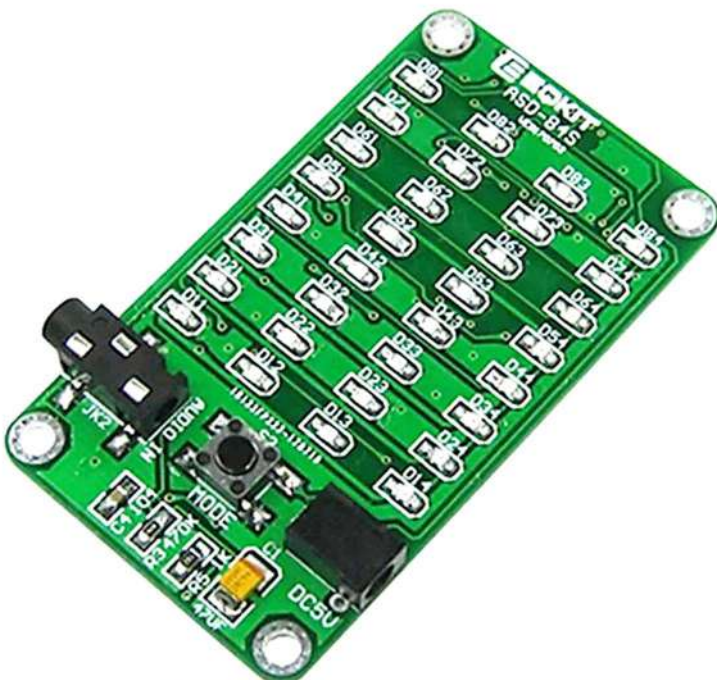
Step 2: Connect audio.

Step 3: DC 4-9V voltage.

Step 4: Adjust working mode

Step 5: Test and use.

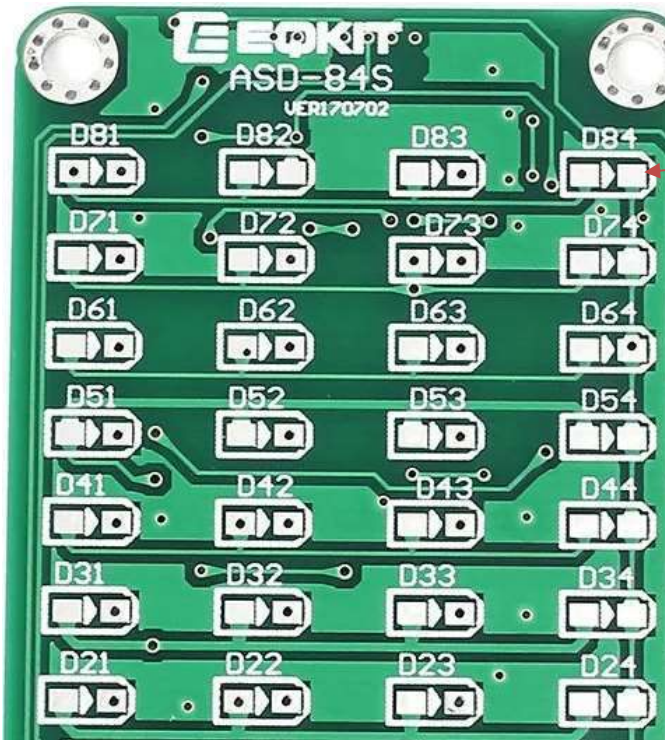
Note: When installing the LED, please keep the same line in the same colour.



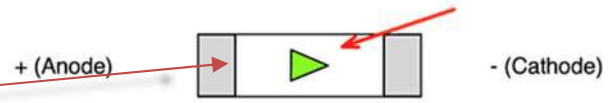
### Using Attention:

- Make sure all components in right direction and right place.
- See LED placement Marking Below
- Check whether Solder has made Full contact to solder pad and part. This is very important.
- The soldering iron can't touch the components for a long time, otherwise the components will be damaged because of the high temperature.
- It is recommended to use a stable power supply, otherwise it may interfere with the audio signal output.

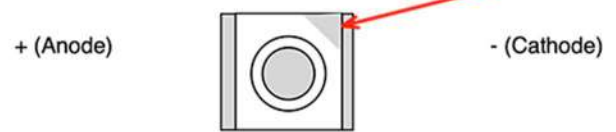
**LED placement Marking**



Some variations of cathode markers  
(Seen from under the led)



Here are variations that have the  
Cathode marker on top:



**Frequency asked questions:**

- Why can't work?
- Q: Please make sure all components in right direction and right place and check whether Soldering is completed. This is very important.

**Install tools you need preliminary preparation by yourself:**

- Soldering iron.
- Multimeter.
- Solder wire.
- Iron stand.
- Diagonal cutting pliers.
- The screwdriver.
- Tweezers.
- Long nose pliers.
- Suction tin.
- Cleaning sponge.
- Screwdriver set.

Description:				
An audio indicator that bounces with music.				
Parameter:				
Parameter	Value			
Model	ASD-84S			
Operating Voltage	DC 5V			
Work Current	<=35mA			
Standby Current	<=5mA			
Signal Input Way	3.5mm Audio Wire			
LED Color	Red,Green,Blue,Yellow			
LED Array	line4, row 8			
PCB Size	64.2*36.5mm			
PCB Mounting Hole	3mm			
PCB Hole Distance	58.1*30.5mm			
Note: LED should be the same color in one line/row				
Component list:				
NO.	Name	PCB Silk Screen	Value	QTY
1	SMD 0805 Resistor	R1	10ohm	1
2	SMD 0805 Resistor	RX1-RX4,RY1-RY8	47ohm	12
3	SMD 0805 Resistor	R4,R5	1K	2
4	SMD 0805 Resistor	R2,R3	470K	2
5	SMD 0805 Capacitor	C2-C4	0.1uf	3
6	Electrolytic Capacitor	C1	47uF	1
7	Contact switch SMD	S3	6*6*5mm	1
8	IC 1084S	U1	SOP-16	1
9	Audio input socket	JK2	SMD3P	1
10	Power input socket	JK1	3.5mm	1
11	Red LED	D11-D81	SMD 0805	8
12	Green LED	D12-D82	SMD 0805	8
13	Blue LED	D13-D83	SMD 0805	8
14	Yellow LED	D14-D84	SMD 0805	8
15	USB to DC Line		3.5mm 0.8M	1
16	PCB		64.2*36.5mm	1
Operation method				
Working model	Working model	Display	Function description	Default declaration
Short press	Quick refresh speed	3	Refresh speed is very quick, very dynamic	2
	Medium refresh rate	2	Refresh speed is average	
	Slow refresh rate	1	The refresh speed is slow and the vision is good	
Long press	High sensitivity	H	Capable of detecting weaker signals	B
	Medium sensitivity	B	Able to adapt to most signals	
	Low sensitivity	L	Capable of filtering weaker interfering signals	
Press and hold the button first,then switch on the power,Get into Factory mode				

ASD-84 Audio Spectrum Display schematic

