

Building a rubber band powered plane is simple, educational, and fun. Follow these steps to assemble your aircraft successfully

1. Gather Materials

- Rubber band powered plane kit (or lightweight balsa wood, propeller, and rubber band)
- Glue or adhesive (if required)
- Scissors or hobby knife (for trimming parts)
- Small pliers or tweezers (optional)

2. Identify Parts

- Fuselage (main body of the plane)
- Wings and tail fins
- Propeller and rubber band
- Landing gear (if included)
- Assembly instructions

3. Assemble the Fuselage

- Attach the wings to the fuselage carefully. Make sure they are straight and aligned.
- Fix the tail fins in place to provide stability in flight.

4. Install the Propeller and Rubber Band

- Attach the rubber band to the propeller shaft and secure the other end inside the fuselage.
- Twist the rubber band gently to avoid over-stretching or breaking.

5. Check Balance

- Make sure the plane is balanced horizontally. Adjust wings or tail fins slightly if it tilts to one side.

6. Test Flight

- Wind the propeller 5–10 turns (depending on rubber band strength).
- Place the plane on a flat surface or gently toss it into the air.
- Observe the flight path and make small adjustments to improve glide and stability.

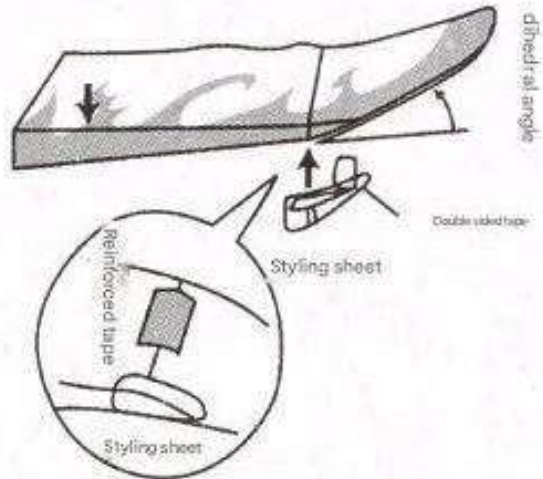
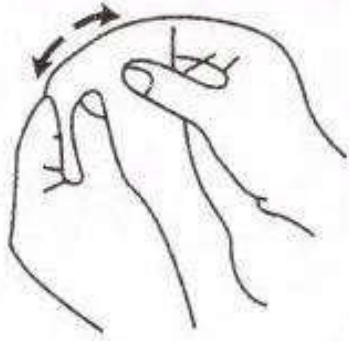
7. Experiment & Customize

- Try different wing angles, tail positions, or rubber band tensions to see how flight changes.
- Paint or decorate the plane for a personal touch.

Installation guide

1 Standard wing

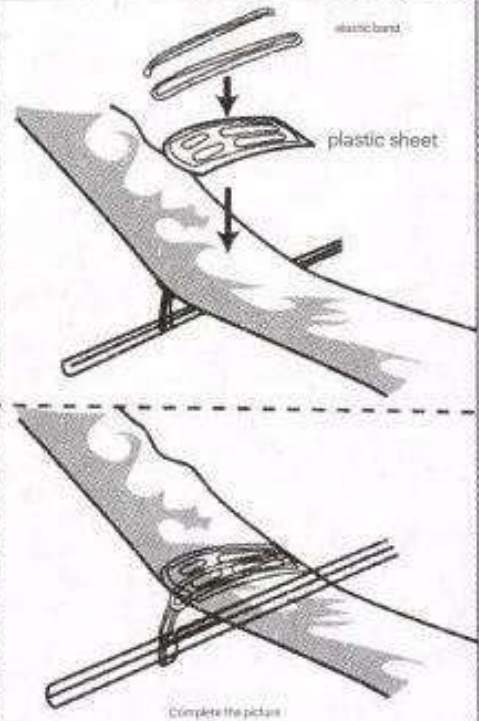
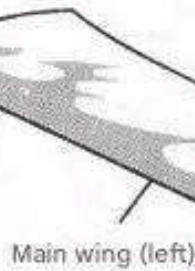
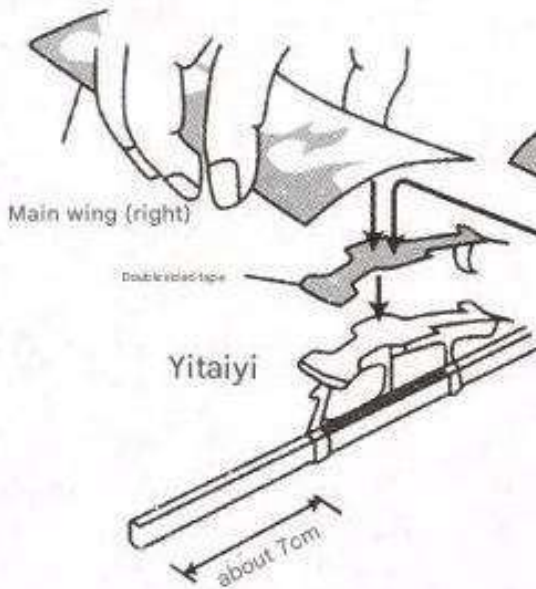
carefully fold the wing shape according to the indications on the style sheet



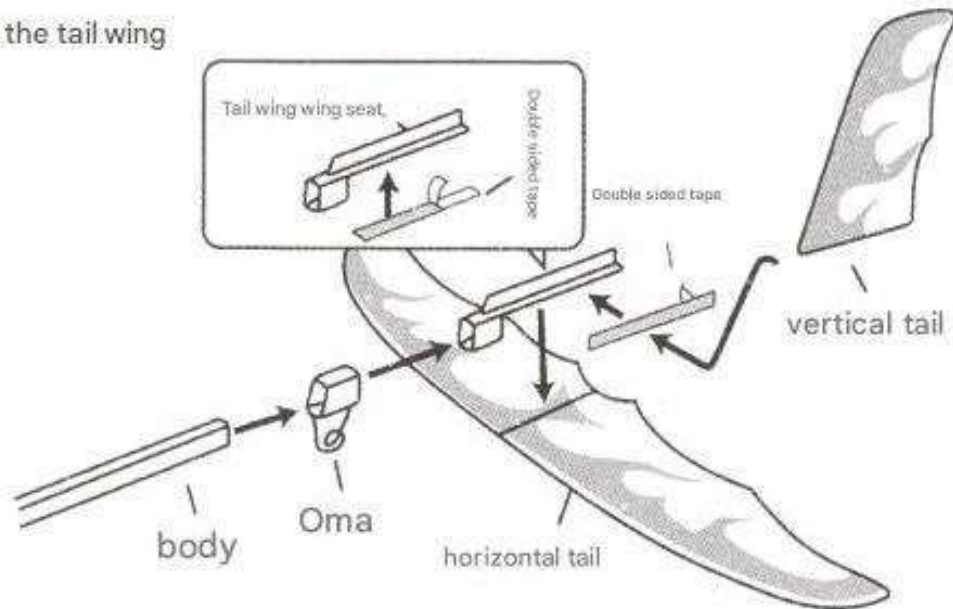
Use a shaping plate to position the dihedral angle on the wing.

2

Install main wing



5 Install the tail wing



4 Final assembly

